

USB Serial Port Driver (Type-III)

USB driver software Installation manual

Ver. 2.12.28.DS

Table of contents

1. Introduction	3
1—1. Caution	3
1—2. Software package contents	3
2. Supported OS and PC	4
3. USB interface setting on Printer	5
4. USB driver installation	6
5. Confirming USB driver installation	9
5—1. Checking COM port No. at Windows Device Manager	9
6. USB Serial Port Driver function	10
6—1. About communication protocol of Virtual COM port	10
7. Precaution	11
7—1. Printer shutdown or panel reset	11
7—2. Printer rest by printer command	11
8. Uninstalling driver	12

1. Introduction

This is USB driver installation manual for SA series printer. Please read thoroughly before its use.

1-1. Caution

- This software cannot be used other than SA series printers.
- Windows 7、Windows 8、Windows 8.1, Windows 10) is registered trademark of Microsoft Corporation.

1-2. Software package contents

Followings are contained in this software package

- Driver install CD
- User manual (This document)

2. Supported OS and PC

Supported PC

Windows PC with USB1.1/2.0/3.0 port

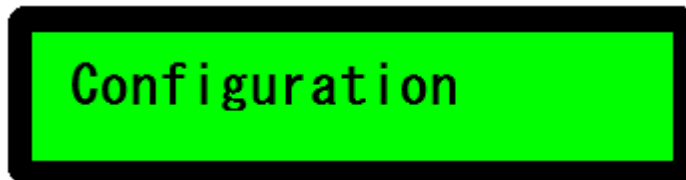
Supported OS

Windows 7	Japanese/English	32bit/64bit
Windows 8	Japanese/English	32bit/64bit
Windows 8.1	Japanese/English	32bit/64bit
Windows 10	Japanese/English	32bit/64bit

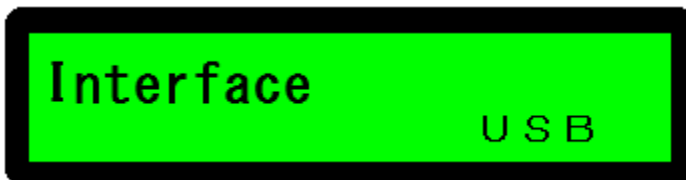
3. USB interface setting on printer

Followings are procedure for setting printer interface to USB.

- (1) Remove USB cable from printer.
- (2) Turn printer **Power on** while pressing [ENTER] key down.
- (3) LCD shows 「**Configuration**」 then press [ENTER] key once.



- (4) LCD shows 「**Interface**」. Press [←] [→] to select 「**USB**」 and press [ENTER] key once.



- (5) Select USB type of printer.
Use [←] [→] key to select 「**Type 3**」 and press [ENTER] key once.



Note: On some models, USB type select menu will not be shown.
Please skip to step (6) in such case.

- (6) Press [PAUSE] key **twice** to show 「**Ready**」 on LCD.



- (7) This **completes** USB setting of printer.

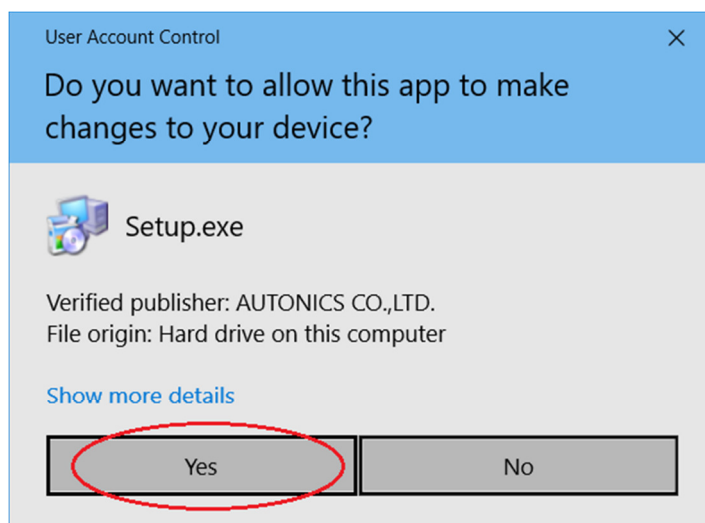
4. USB driver installation

In order to utilize USB interface, installation of driver software is required. Please take following steps for the installation.

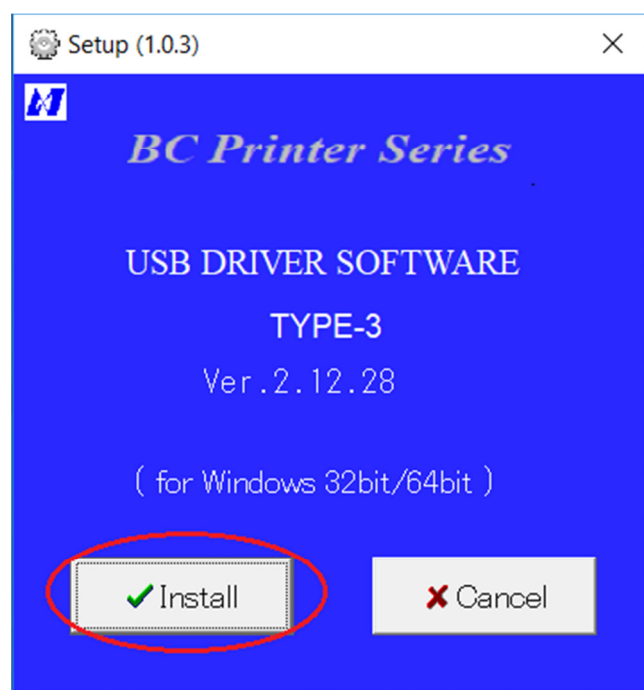
(1) Executing USB driver install program

Double click 「**Setup.exe**」 in CD to activate installation program.

Below screen will be shown. Click [**Yes**] to proceed.



Click [**Install**] button to start installation



(2) USB driver installer screen will be shown.

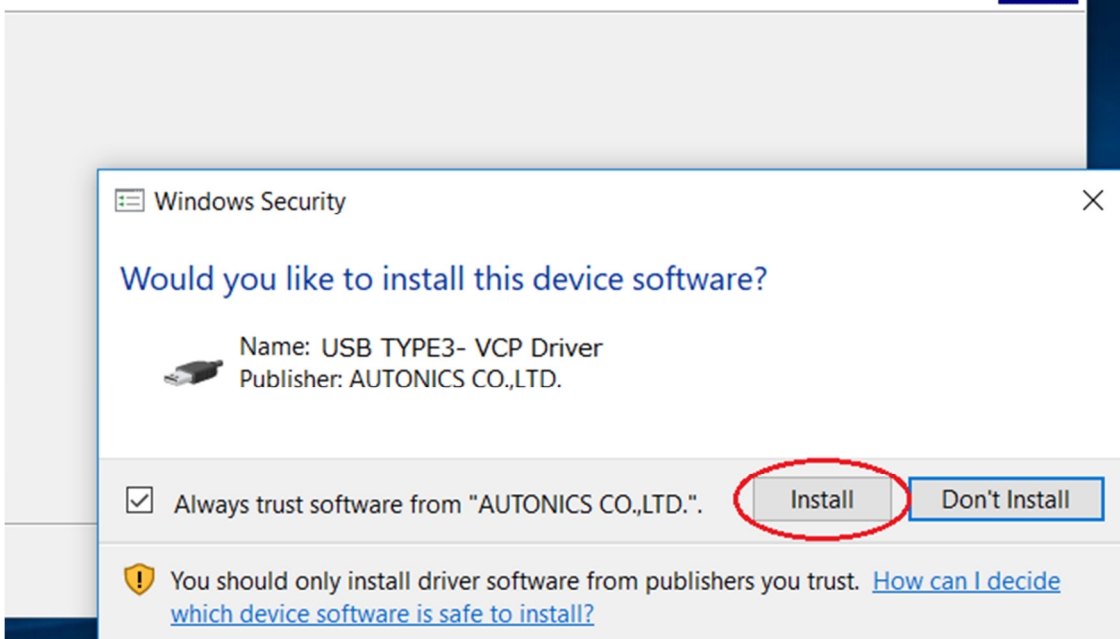
Click [**Next**] button to proceed.



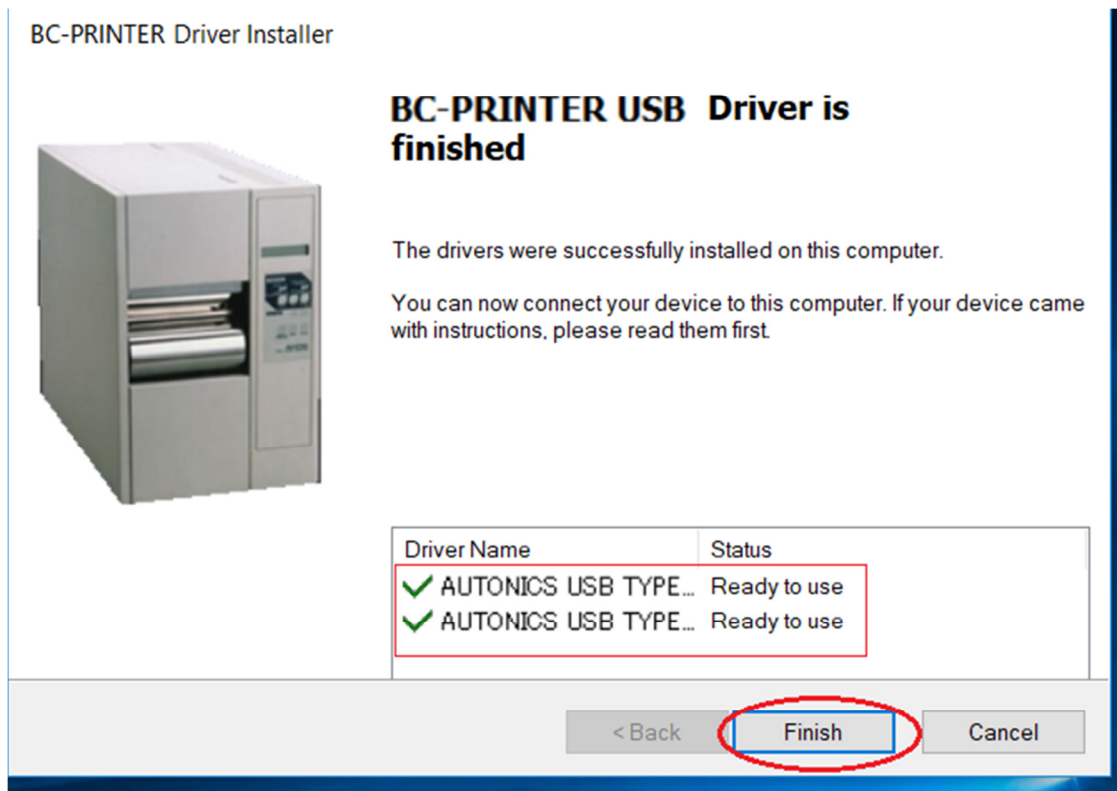
(3) Installation will start. Click [**Install**] in case below screen is shown.

BC-PRINTER Driver Installer

Installing **BC-PRINTER USB Driver** started



- (4) Below screen will be shown as installation complete. Press [**Finish**] button to close installation program.



5. Confirming USB driver installation

Confirm if driver software is properly installed or not.

Connect PC and printer with USB cable and turn power on to start.

5-1. Checking COM port No. at **Windows** Device Manager.

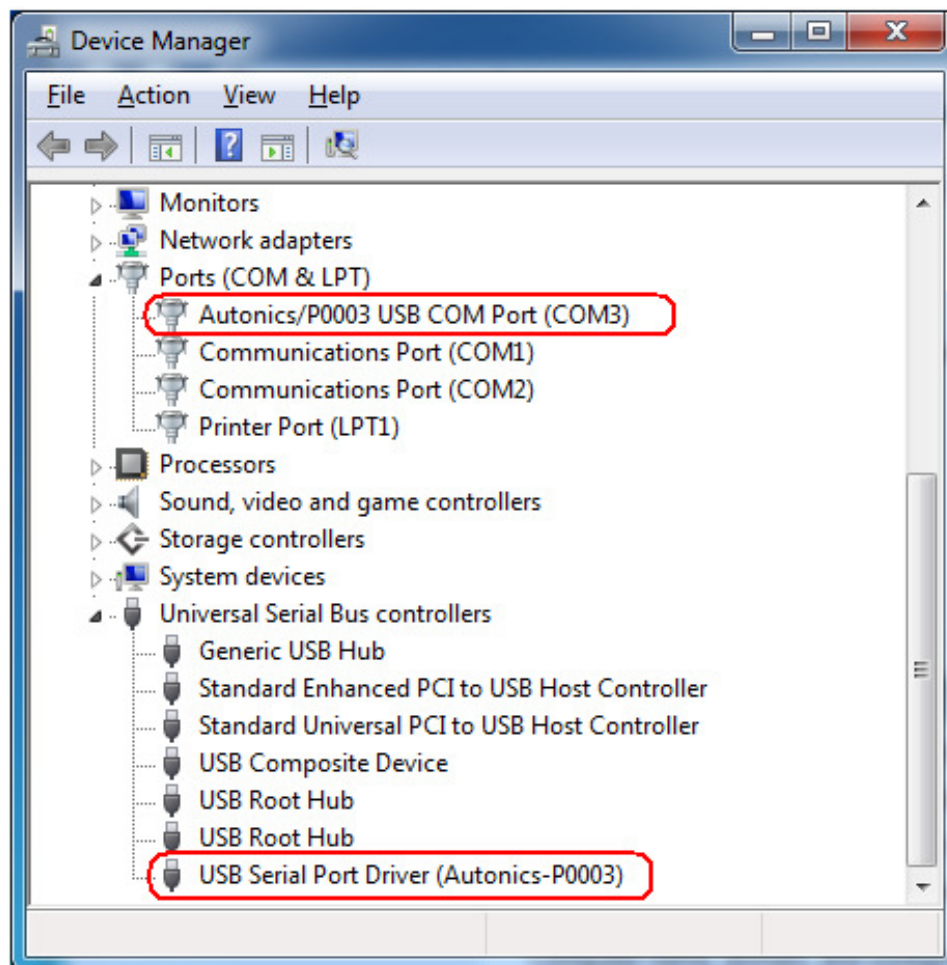
It requires some time (Few sec. to few min. depends on PC condition) for Windows to recognize USB device at first connection.

Open Windows Device Manager.

Select 「Ports (COM & LPT)」 from hardware list.

Confirm 「**Autonics/P0003 USB COM Port (COMn※)**」 is shown in device list.

※ COM Port No **COMn**, assigned by driver differs by PC. **COM4** is used for this example.



6. USB Serial Port Driver function

USB Serial Port Driver provides virtual COM port which utilize USB host controller of PC. USB communication with device became available by PC to access virtual COM port provided by driver.

From Windows application aspect of view, this virtual COM port can be utilized as same as standard COM port.

6-1. About communication protocol of Virtual COM port

For standard COM port, following communication protocol need to be set but for USB Serial Port Driver, some protocol can be ignored.

Communication protocol	Standard COM port	Virtual COM port
Port No. (COMn)	Required	Required
Baud rate (Bi/sec.)	Required	(*)
Data bit	Required	(*)
Parity	Required	(*)
Stop bit	Required	(*)
Flow control	Required	(*)

(*) . . . Can be ignored (Default setting recommended)

7. Precaution

7-1. Printer shutdown or panel reset

In case the Virtual COM port (USB Serial Port) is utilized by application in Host side, please make sure to **close Virtual COM port or application software** before turning printer power off or resetting printer through panel operation.

7-2. Printer reset by printer command

In case for resetting printer by sending printer reset command 「**RES**」 from Host application program, please set **delay** parameter. Without the delay, printer will be reset immediately after receiving **RES** command. In this case, Host application program might stall before closing Virtual COM port after sending RES command.

To avoid such problem, the delay setting is recommended.

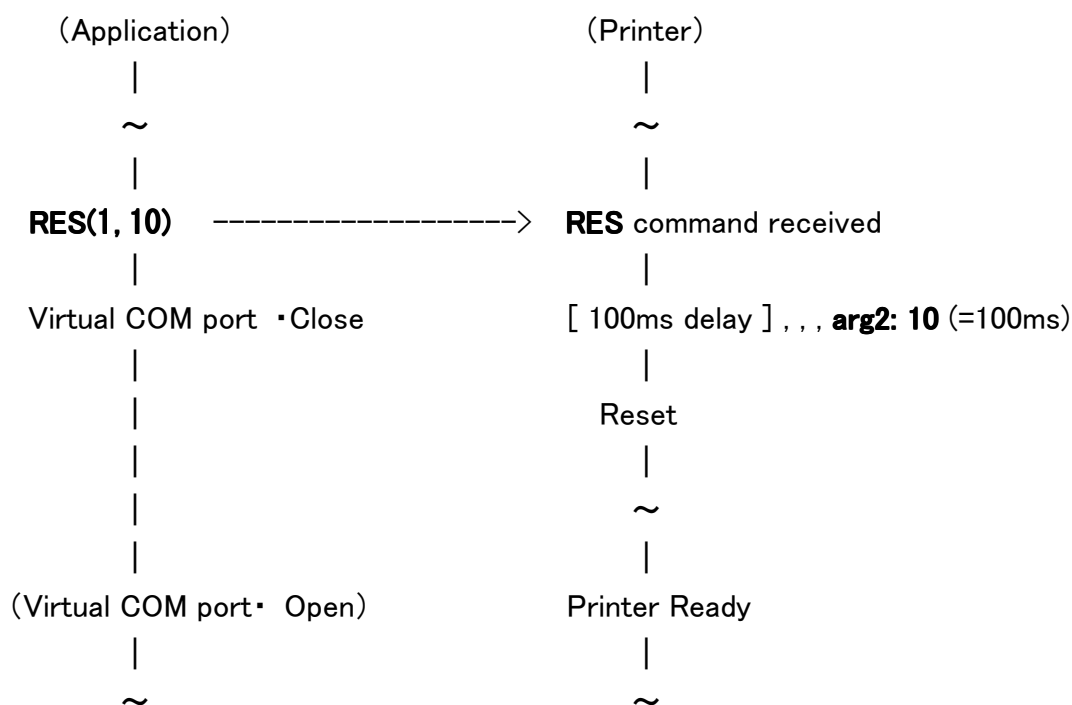
About RES command

Format **RES(arg1 [, arg2])**

arg1 Signal after reset (1 :With signal、2 :No signal)

arg2 **Delay** for rest (0~999 (x10ms)、0 for abbreviation)

Example for RES command sequence

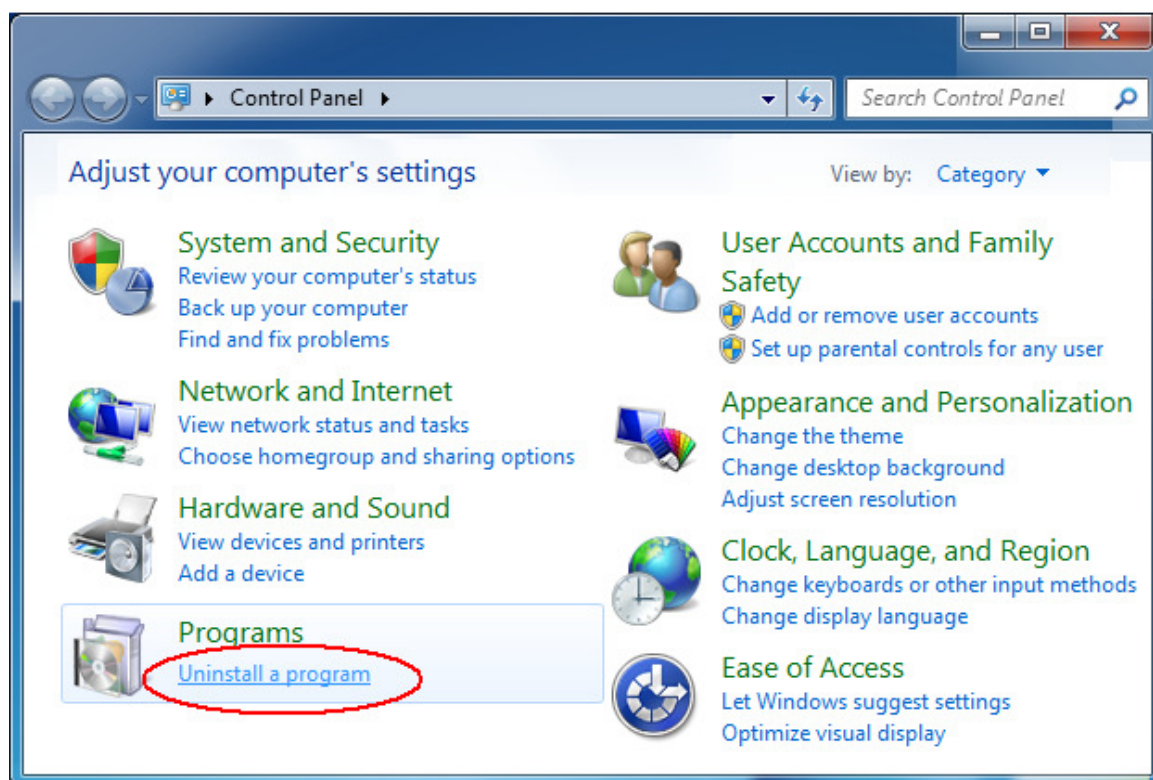


8. Uninstalling driver

This explains step for how to uninstall USB driver.

(1) Turn printer power off. (Or remove USB cable from printer)

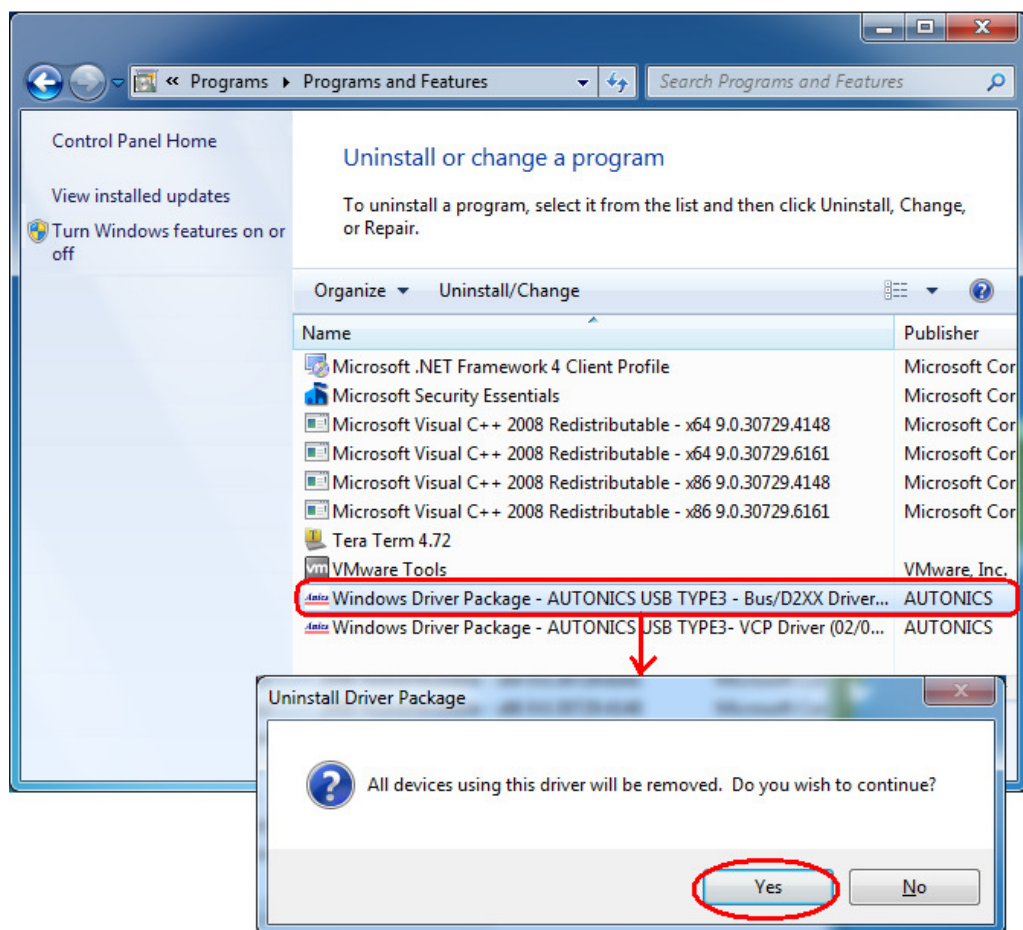
(2) Go to [Control Panel] > 「Uninstall a program」



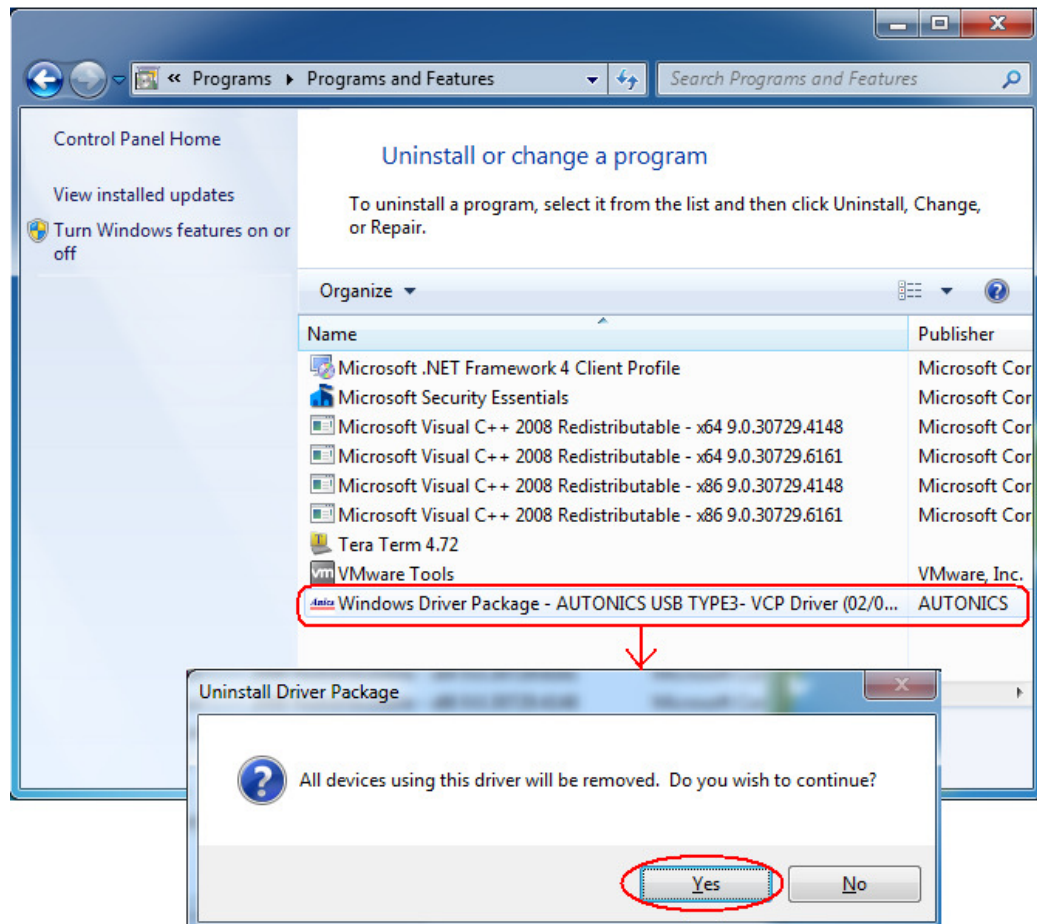
(3) Delete 2 driver package from 「Program and Features」 screen.

(Package version No. might differ from below example)

① Deleting **Windows** driver package – AUTONICS USB TYPE3 – Bus/D2xx Driver.



② Deleting **Windows** driver package – AUTONICS USB TYPE3- VCP Driver



This completes uninstallation of USB driver.

USB-TYPE3 driver software installation manual

Date : 2018/03/29 Ver. 2.12.28.DS

